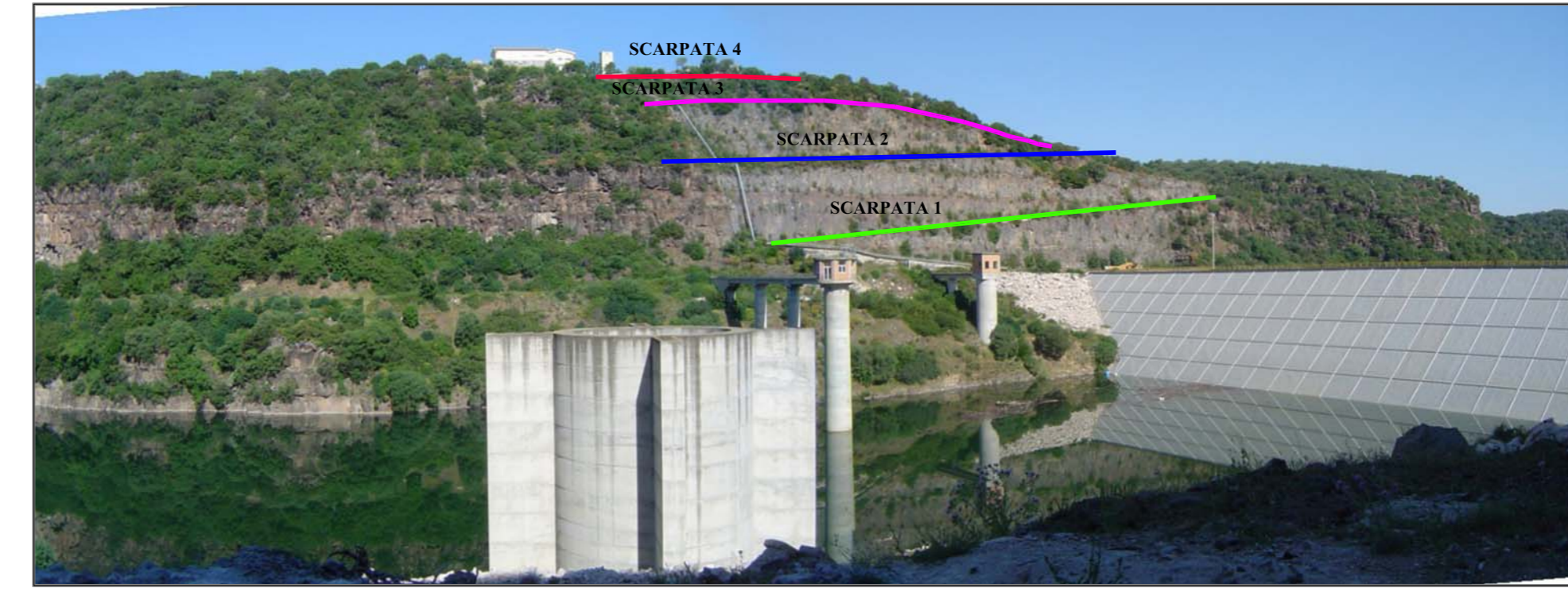


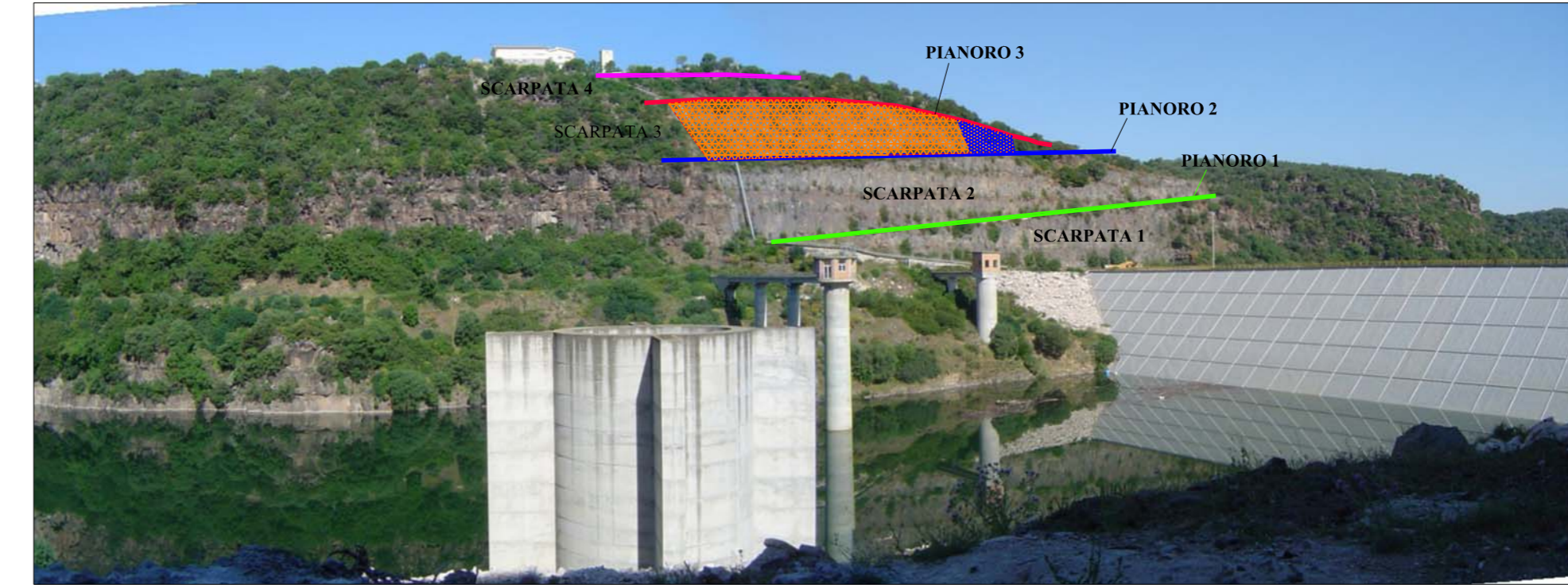
PLANIMETRIA
SCALA 1:2000



FOTO AEREA ZONA INTERVENTO
SCALA 1:2000

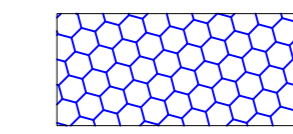


1.FOTO PROSPETTICA VERSANTE OVEST

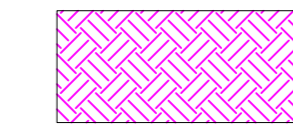


2.LOCALIZZAZIONE INTERVENTI VERSANTE OVEST

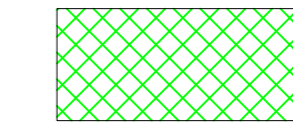
LEGENDA INTERVENTI



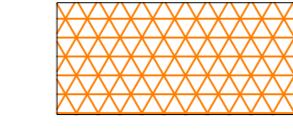
POSA IN OPERA DI RETE PARAMASSI
SU SUPERFICIE DI m 7.5x28



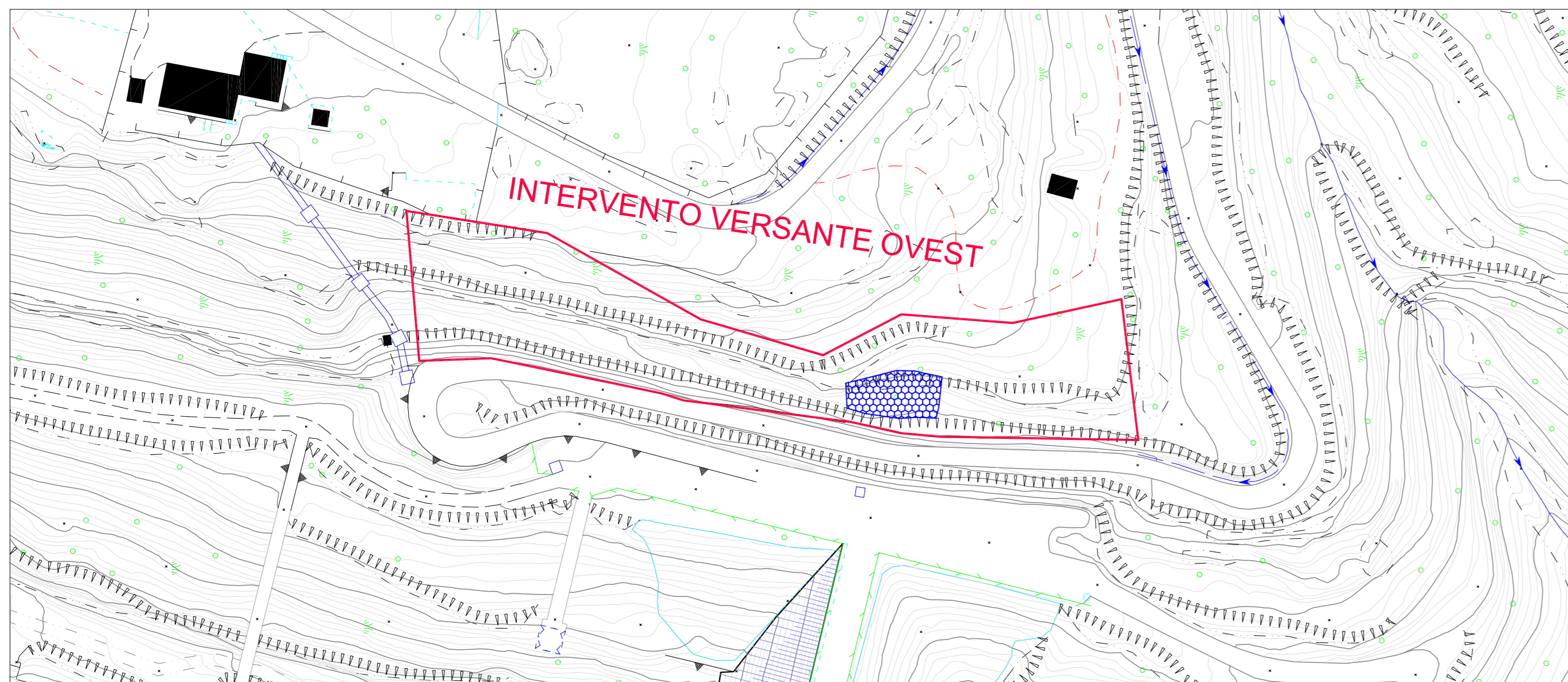
PULIZIA PIANORO "2" SU SUP DI m 180x3
PULIZIA PIANORO "3" SU SUP DI m 70x3



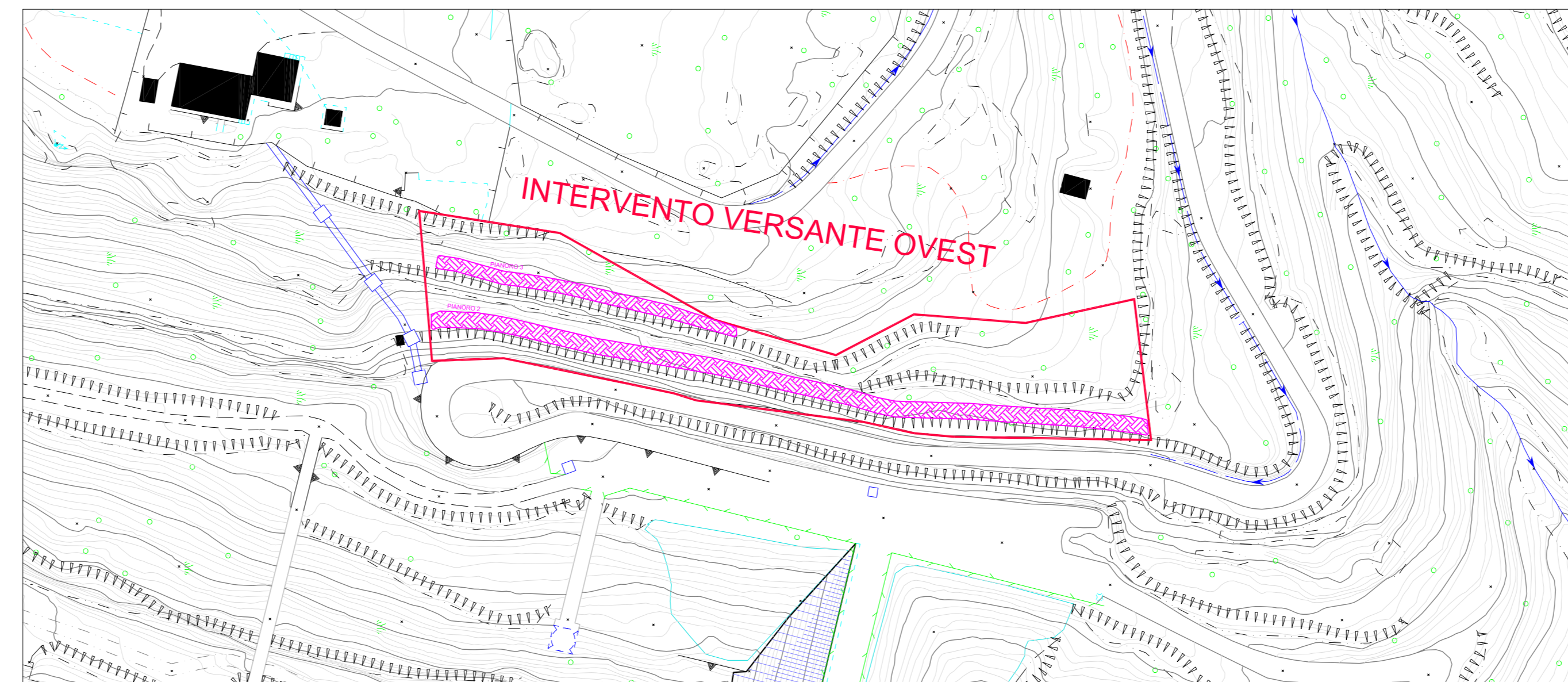
BONIFICA ED ERADICAMENTO



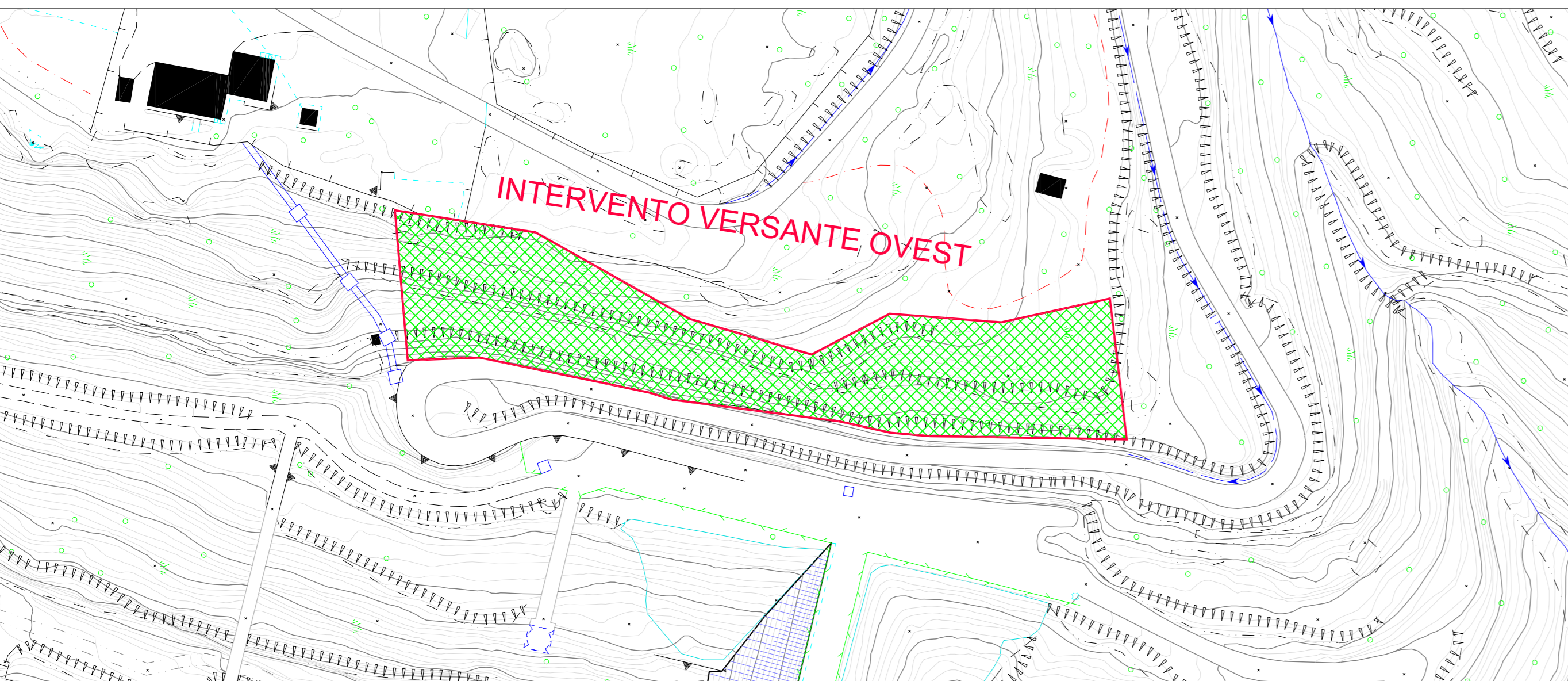
POSA IN OPERA DI PANNELLI FUNE



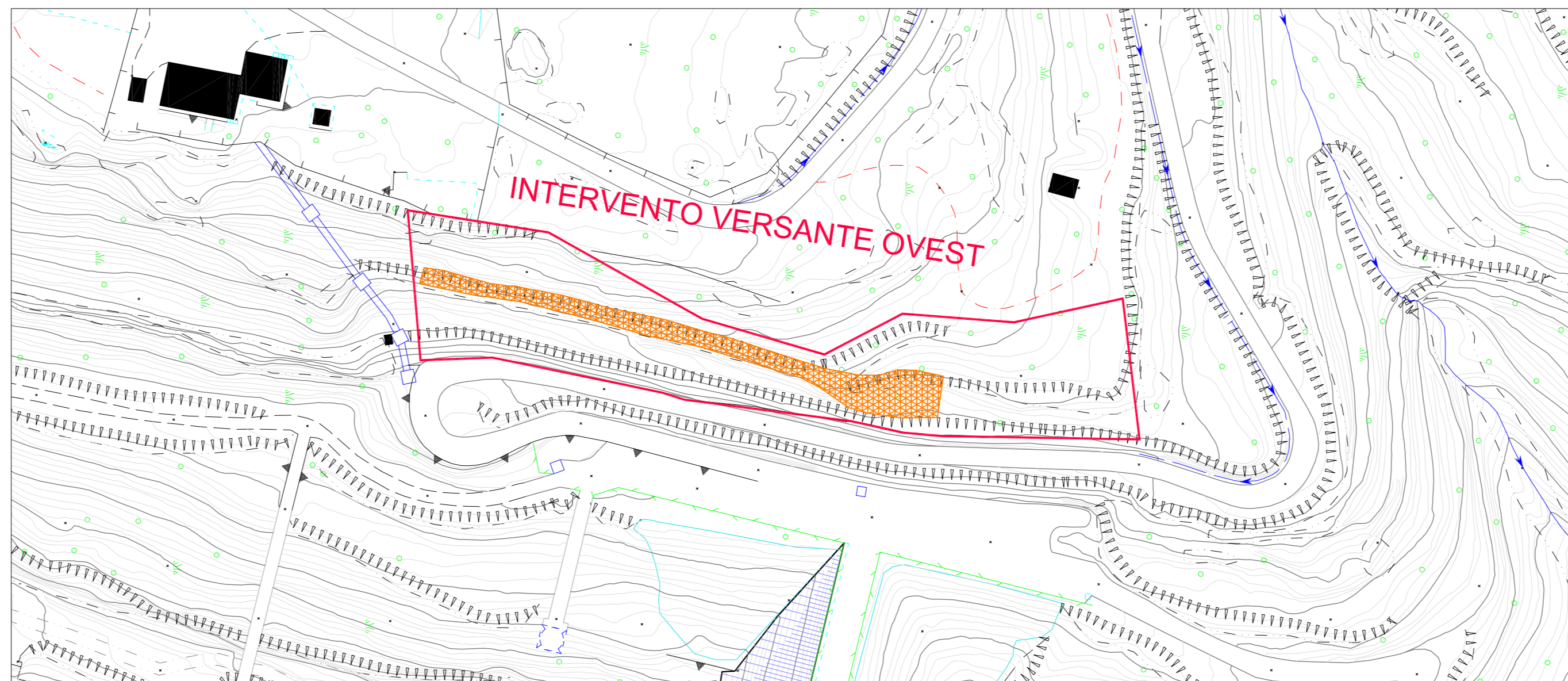
RETE PARAMASSI
SCALA 1:1000



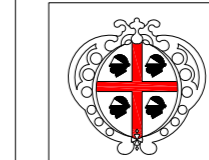
PULIZIA E SBANCAMENTO
SCALA 1:1000



ERADICAMENTO ESSENZE VEGETALI
SCALA 1:1000



PANNELLI FUNE
SCALA 1:1000



REGIONE AUTONOMA DELLA SARDEGNA
ASSESSORATO DEI LAVORI PUBBLICI



CONSORZIO DI BONIFICA DELLA
SARDEGNA CENTRALE - NUORO



COMMITTENTE
CONSORZIO DI BONIFICA DELLA SARDEGNA CENTRALE
Via S.Barbara, 30 - 08100 NUORO tel.0784/34777

Firma

Disgaggio massi pericolanti e sistemazione versanti
prospicienti l'invaso di Pedra Othoni sul fiume Cedrino

FASE
DEFINITIVO ESECUTIVO

SCALA
1:1000 - 1:2000

DATA
LUGLIO 2006

OGGETTO
PLANIMETRIA GENERALE CON INTERVENTI

NUM. ALLEGATO

PROGETTISTA
Dr.Ing. CLAUDIO PINTORE - Dr.Ing. Marcello Calla - Dr.Geol. Michele Ena
Piazza Crispi, 17 - 08100 Nuoro tel./fax. 0784 37128 mail. posta@studio-pintore.it

16